

Next Steps - Priorities Wren Spinney School



Quality of Education



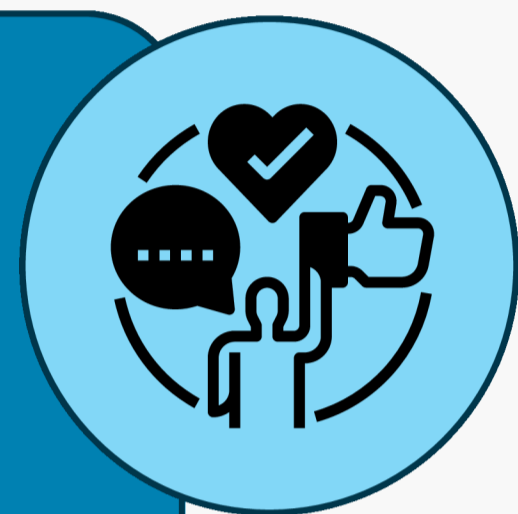
To develop knowledge and understanding of play:

- By using observation to develop pupils personal schemas and expand upon these
- Through the recognition of gestural communication, where applicable, within play
- Ensuring opportunities for intensive interaction are utilised effectively

Behaviour and Attitudes

To raise knowledge and level of staff understanding by:

- Continuing to development of communication knowledge across the school using training delivered by the SaLT
- Having a focus on gestural communication as part of the schools Total Communication environment
- Ensuring there is established knowledge of pupils communication methods and targets (communication grid)



Personal Development

To continue to facilitate Personal Development opportunities:

- By embedding RSE across the school
- Promoting physical activity within the curriculum and through other opportunities
- Supporting pupils with mental health and wellbeing
- Through the refinement of the Semi-Formal Curriculum
- Continual referral back to the Equals scheme of work to embed staff knowledge



Leadership and Management

To continue to develop a constant and consistent CPD into school staff training; incorporating relevant succession planning.

- Additional sessions available to build staff knowledge
- Whole school and specific training sessions to upskill staff. I.e. Team Teach, medical training, Communication
- Sharing of good practice with external partners (Exemplar Development Days)
- Refine the quality assurance process to ensure its effectiveness while being mindful of workload



Post-16

To have realistic and aspirational goals for all learners:

- Meaningful and appropriate learning opportunities which are relevant to student destinations
- Sharing of information with Parents/Carers through communication portals (ie. website, Facebook, weekly newsletter)
- Ensuring EHCP targets are relevant and applicable for Future Destinations and PfA

16